



VOLUME 2

# Draft Meath County Development Plan 2021-2027

VOLUME 3 BOOK OF MAPS AMENDMENTS

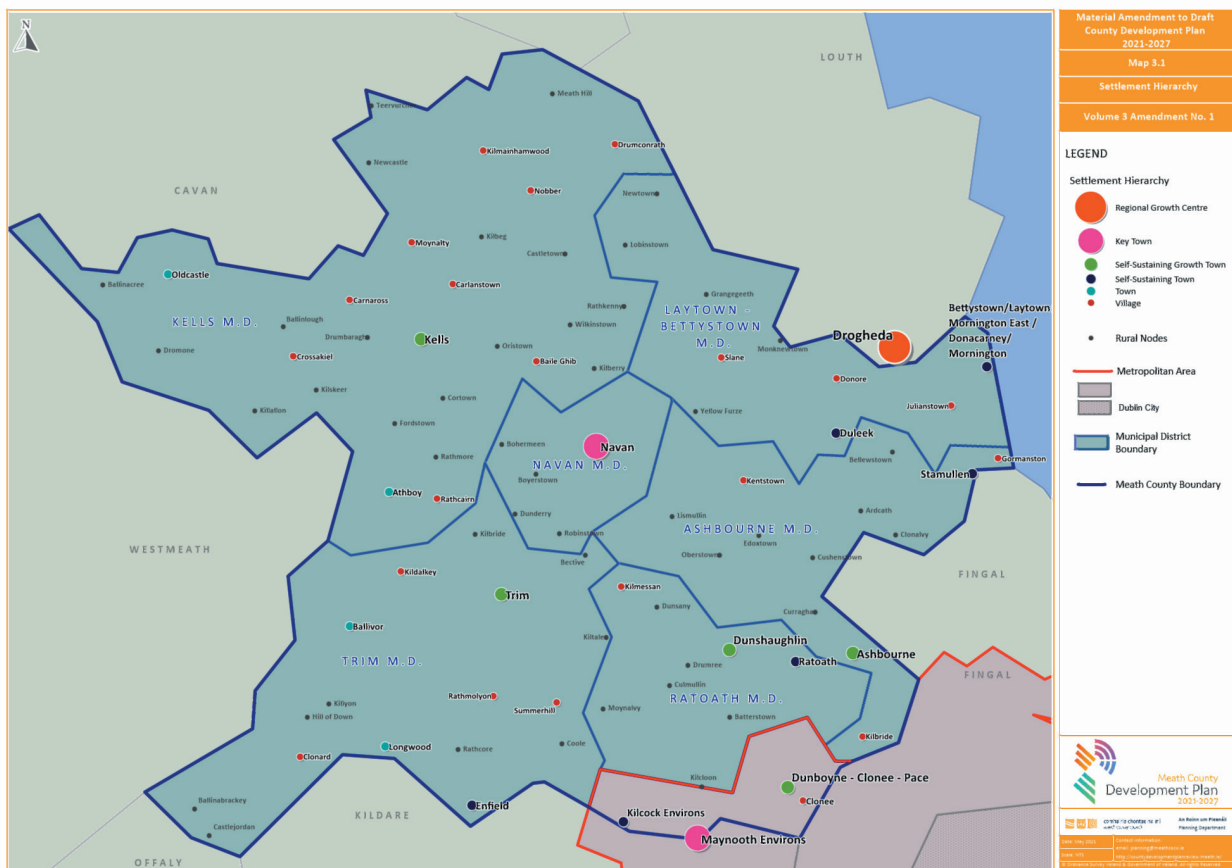
MEATH:  
EUROPE'S **BUSINESS**  
**READY** REGION



<b>Amendment No.:</b>	<b>Proposed Volume 3 Amendment No. 1</b>
<b>Submission/ NOM/ (FTF) NOM Numbers</b>	MH-C5-816 The Office of the Planning Regulator
<b>Chapter/Section</b>	Map 3.1 Settlement Hierarchy

### Proposed Material Amendment

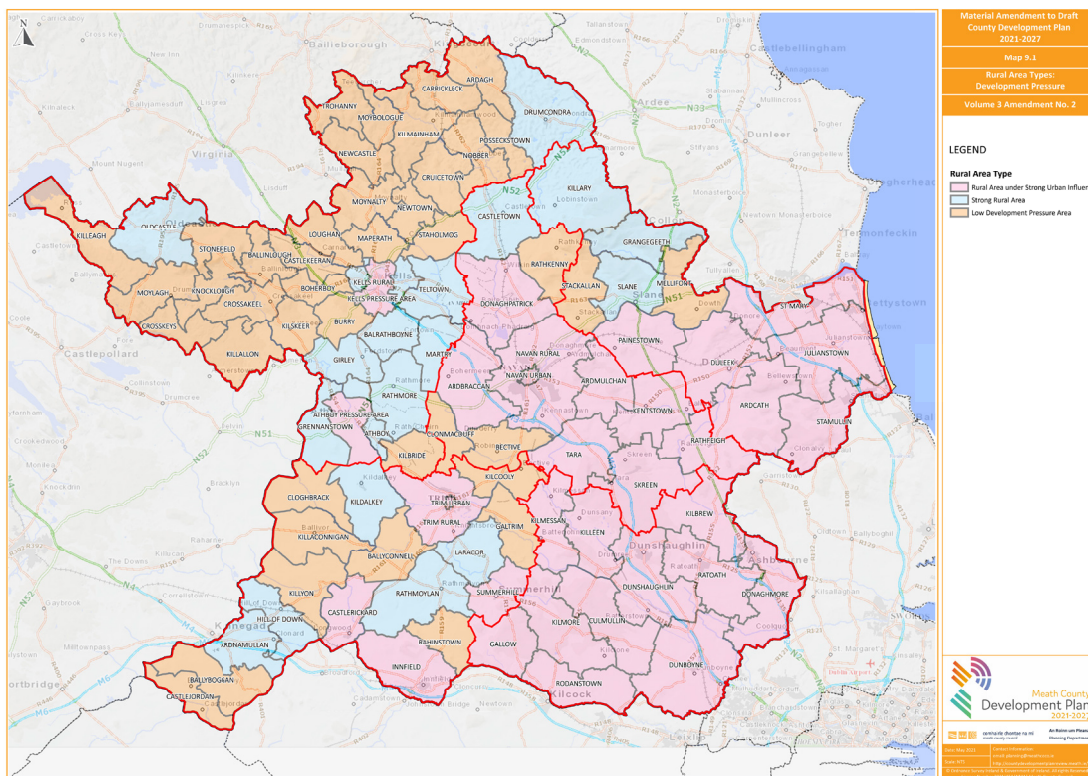
Amend Map 3.1 'Settlement Hierarchy' to reflect the changes to status of **Duleek, Longwood, Ballivor and Clonee**. Map 3.1 will also identify the rural nodes (Refer to Proposed Amendment Chapter 3.1 Settlement & Housing Strategy and Proposed Amendment Chapter 2.2 in Volume 1 which details the amendments to the Settlement Hierarchy)



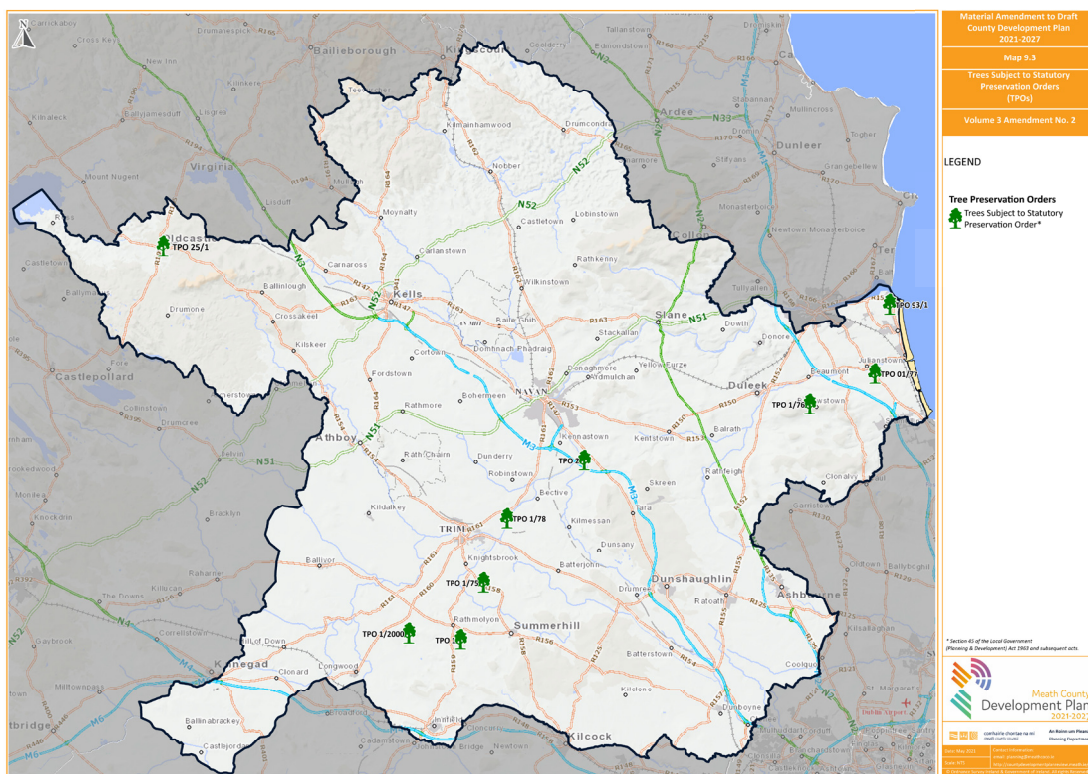
**Proposed Amended Map**

Amendment No.:	Proposed Volume 3 Amendment No. 2
Submission/ NOM/ (FTF) NOM Numbers	Grouped Themed Submission No. 1 -Rural Housing Policy, NOM 50 – Cllr Brian Fitzgerald.
Chapter/Section	Maps 9.1 to 9.6
Proposed Material Amendment	
<p>Maps to be included in Volume 3 Book of Maps associated with the existing County Development Plan 2013-2019 Chapter 10 Rural Development are as follows;</p> <ul style="list-style-type: none"> <li>• Rural Area Types Development Pressure 10.1 (now Map 9.1)</li> <li>• Tree Preservation Order's (TPO) 10.2 (now Map 9.3)</li> <li>• GSI Aggregates Potential Map 10.3 (now Map 9.5)</li> <li>• GSI Granular Aggregates Potential Map 10.4 (now Map 9.6)</li> <li>• Gaeltacht Areas Rathcairn &amp; Gibbstown 10.5 (now Map 9.4)</li> <li>• Management of Future Access to Strategic Corridors 10.6 (now Map 9.2)</li> </ul> <p>Maps to be removed (superceded) are as follows;</p> <p>Maps</p> <ul style="list-style-type: none"> <li>• <del>Map no. 9.1 Rural Area Types Development Pressure</del></li> <li>• <del>Map 9.2 Management of Future Access to Strategic Corridors</del></li> <li>• <del>Map 9.3 Tree Preservation Orders</del></li> <li>• <del>Map 9.4 Gaeltacht Areas</del></li> </ul> <p>Please refer to <b>Proposed Amendment Chapter 9.1</b> in Volume 1 which is associated with this amendment.</p>	



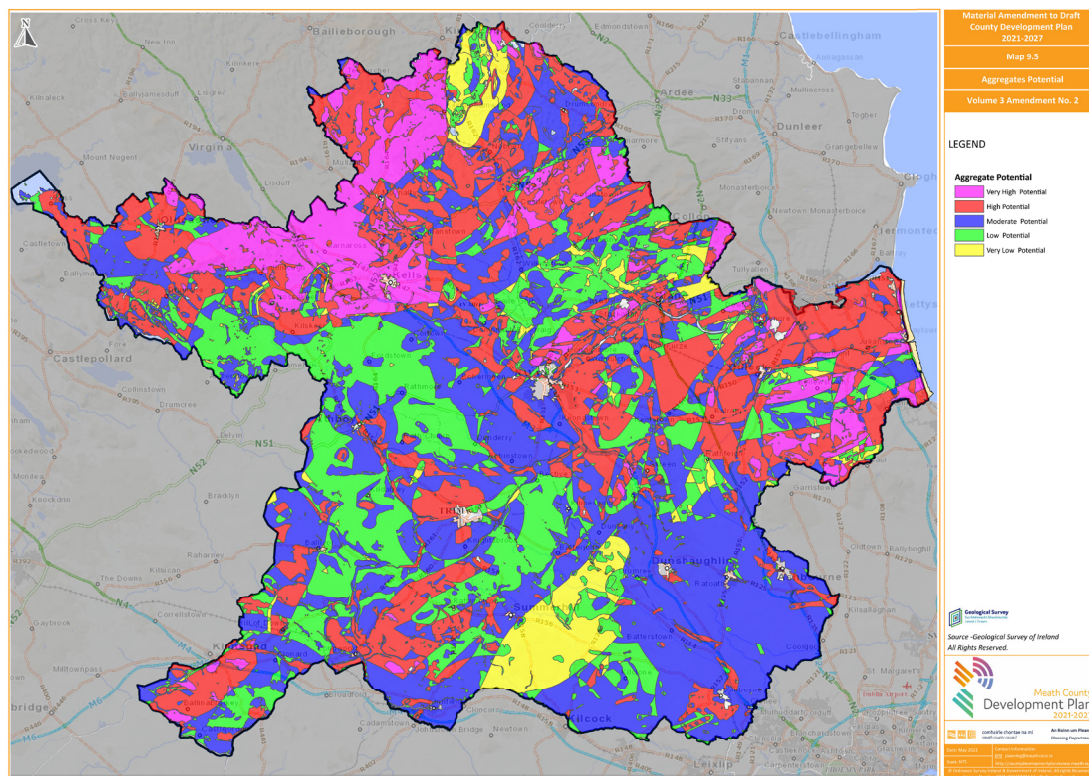


**Rural Area Types Development Pressure 10.1 (now Map 9.1)**

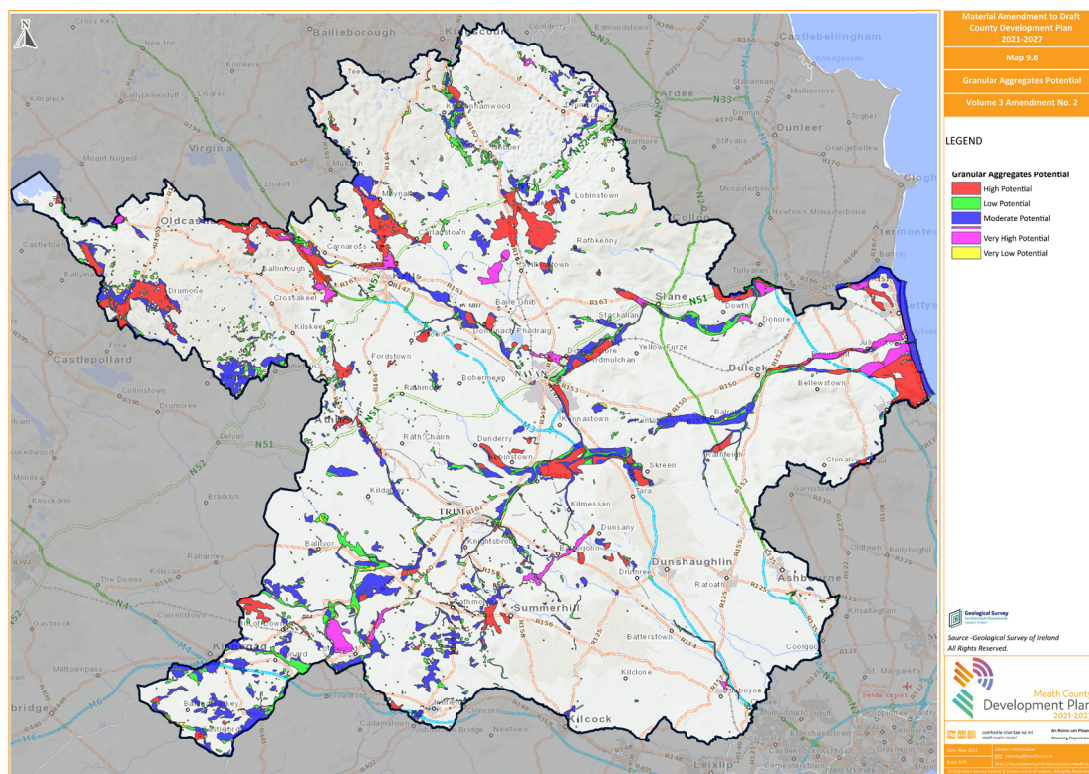


**Tree Preservation Order's (TPO) 10.2 (now Map 9.3)**





**GSI Aggregates Potential Map 10.3 (now Map 9.5)**

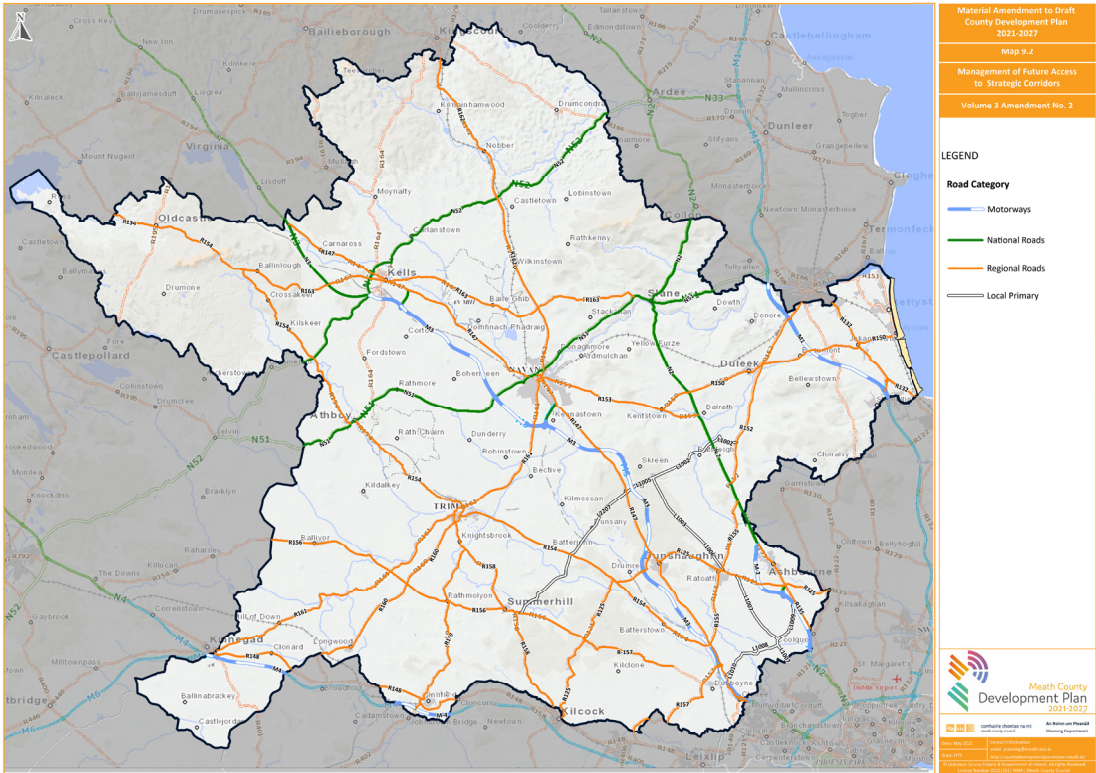


**GSI Granular Aggregates Potential Map 10.4 (now Map 9.6)**





**Gaeltacht Areas Rathcairn & Gibbstown 10.5 (now Map 9.4)**



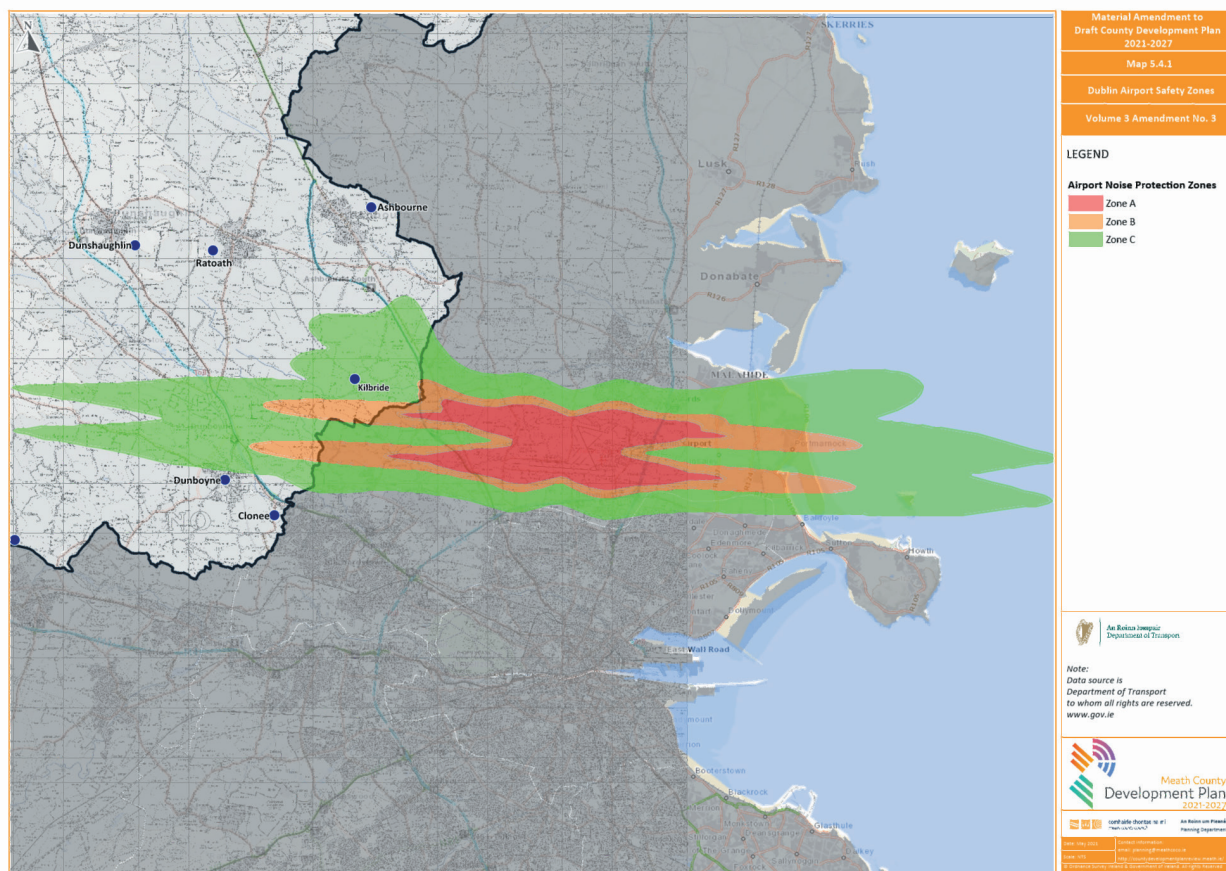
**Management of Future Access to Strategic Corridors 10.6 (now Map 9.2)**

<b>Amendment No.:</b>	<b>Proposed Volume 3 Amendment No. 3</b>
<b>Submission/ NOM/ (FTF) NOM Numbers</b>	MH-C5-826 Dublin Airport Authority (FTF) NOM 6 Cllrs. Maria Murphy & Alan Tobin
<b>Chapter/Section</b>	Map 5.4.1 and Map 5.4.2

### Proposed Material Amendment

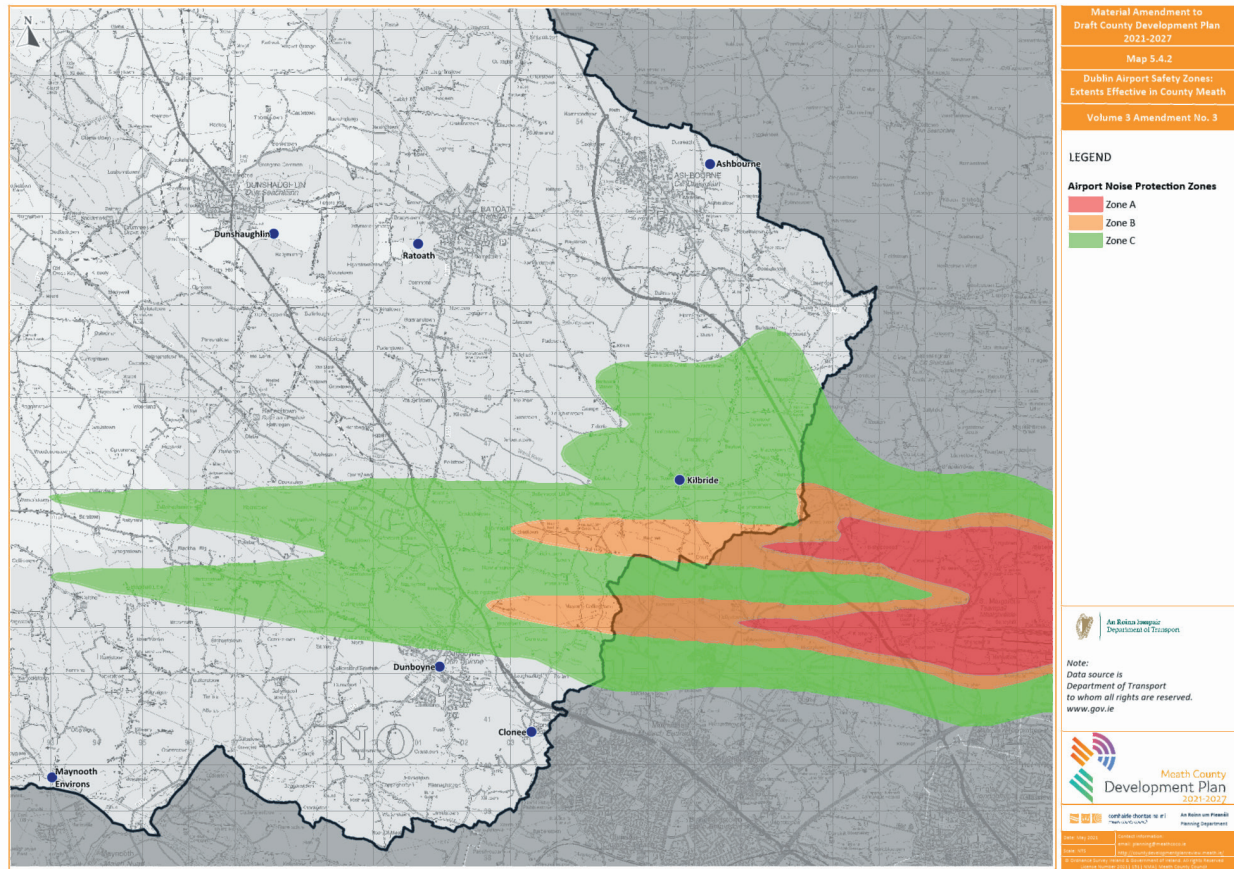
Amend Map 5.4.1 and Map 5.4.2 to update the noise zones to comply with the current Dublin Airport Noise Zones which were reviewed in 2019.

Please refer to **Proposed Amendment Chapter 5.35** in Volume 1 which is associated with this amendment.



**Map 5.4.1**





Map 5.4.2