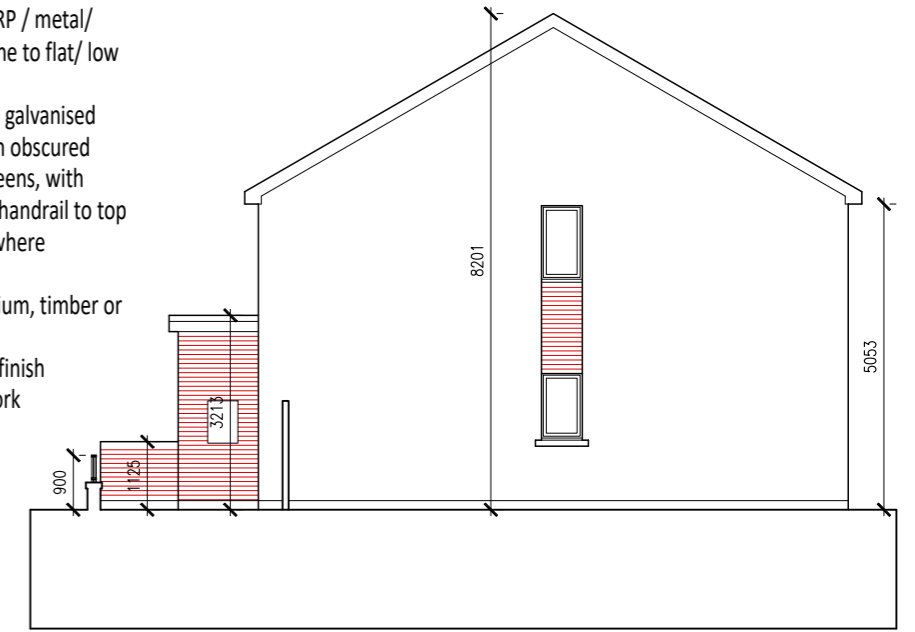


SOUTH ELEVATION

Selected dark grey / black roof tiles / slates
 Selected Aluminium, timber or pvc fascia and soffits
 Selected Grey GRP / metal/ roofing membrane to flat/ low pitch roof
 Selected Painted galvanised steel frames with obscured glass privacy screens, with galvanised steel handrail to top of balcony wall where applicable
 Selected Aluminium, timber or upvc windows
 Selected render finish
 Selected brickwork



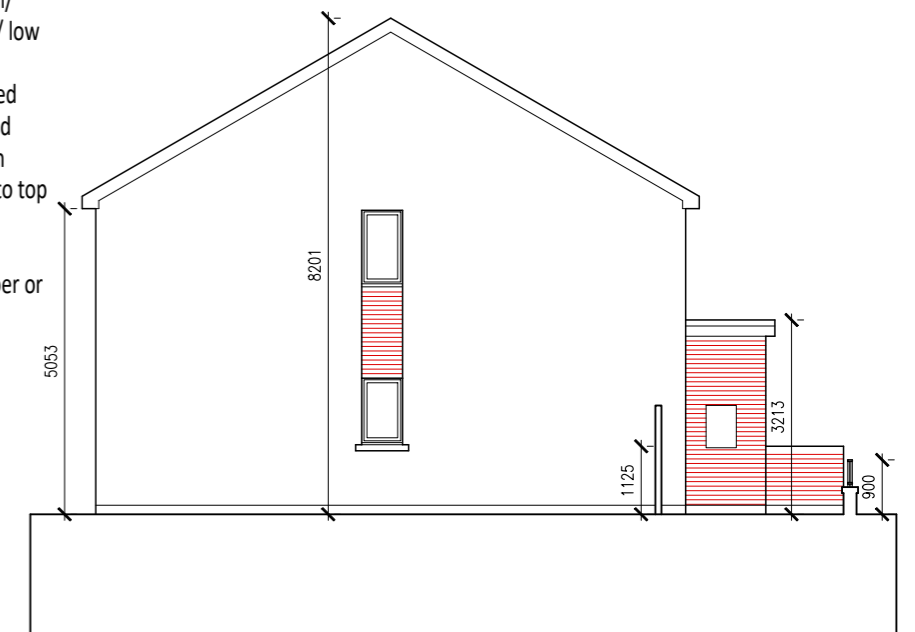
EAST ELEVATION

OPTIONAL WINDOWS IN END GABLES TO OVERLOOK COMMON SPACES.



NORTH ELEVATION

Selected dark grey / black roof tiles / slates
 Selected Aluminium, timber or pvc fascia and soffits
 Selected Grey GRP / metal/ roofing membrane to flat/ low pitch roof
 Selected Painted galvanised steel frames with obscured glass privacy screens, with galvanised steel handrail to top of balcony wall where applicable
 Selected Aluminium, timber or upvc windows
 Selected render finish
 Selected brickwork



WEST ELEVATION

NOTE: FLOOR AREA AND CEILING HEIGHT OF DWELLINGS AE SUBJECT TO MODIFICATION AT DESIGN DETAIL STAGE

NOTES:

PLANNING APPLICATION DRAWING ONLY
NOT FOR CONSTRUCTION
TYPE B

WRITTEN DIMENSIONS TO BE TAKEN IN PREFERENCE TO SCALED DIMENSIONS. ALL DIMENSIONS TO BE CHECKED ON SITE AND ANY DISCREPANCIES TO BE BROUGHT TO THE ARCHITECTS IMMEDIATE ATTENTION. THIS DRAWING IS COPYRIGHT AND IS THE PROPERTY OF SHERIDAN WOODS ARCHITECTS.

All window and door sizes and design are subject to modification to allow compliance with Part B, M + L as part of detailed design.
 Solar panels are located and sized indicatively, and the optimum position will be defined at detailed design stage, which may be in a different location to that indicated.
 Heat pumps maybe located externally or internally subject to detailed design.
 Building heights, boundary wall, eave, parapet and ridge dimensions are subject to minor modification due to ground levels at detailed design.
 Materials, brick type and colour are subject to modification in accordance with availability of material and cost plan considerations.
 All boundary treatments, hard landscape surfaces and street furniture are subject to modification to materials, type and height in accordance with availability of material and cost plan considerations.

| DATE | REV. | STAGE | NOTES: |
|------|------|-------|--------|
| | | | |
| | | | |
| | | | |
| | | | |
| | | | |
| | | | |
| | | | |
| | | | |
| | | | |
| | | | |

| | | | | | |
|---|---|-------|-----------|--------|---------------|
| SHERIDAN WOODS ARCHITECTS + URBAN PLANNERS | | | | | |
| 10 ADELAIDE ROAD, DUBLIN 2 TEL: 01 4791789 EMAIL: info@sheridanwoods.ie WEB: www.sheridanwoods.ie | | | | | |
| CLIENT: | MEATH COUNTY COUNCIL | | | | |
| PROJECT: | PROPOSED RESIDENTIAL DEVELOPMENT AT RATHMOLYON, CO. MEATH | | | | |
| TITLE: | TYPE B - ELEVATIONS 2 BED TERRACED AND END OF TERRACE | | | | |
| JOB NO.: | DRAWING No.: | REV.: | DRAWN BY: | DATE: | SHEET: SCALE: |
| 18022 | PA-103 | - | SW | Feb 22 | A3 1:125 |