

## CONFIRMATION OF FEASIBILITY

[REDACTED]  
[REDACTED]  
[REDACTED]  
[REDACTED]  
[REDACTED]

11 October 2022

**Uisce Éireann**  
Bosca OP 448  
Oifig Sheachadta na  
Cathrach Theas  
Cathair Chorcaí

**Irish Water**  
PO Box 448,  
South City  
Delivery Office,  
Cork City.

[www.water.ie](http://www.water.ie)

**Our Ref:** [REDACTED] **Pre-Connection Enquiry**  
**Navan West, Navan, Meath**

Dear Applicant/Agent,

### We have completed the review of the Pre-Connection Enquiry.

Irish Water has reviewed the pre-connection enquiry in relation to a Water & Wastewater connection for a Housing Development of 1,000 unit(s) at Navan West, Navan, Meath, (the **Development**).

Based upon the details provided we can advise the following regarding connecting to the networks;

- **Water Connection**

- Feasible Subject to upgrades

The Development can be accommodated with three connection points to the Irish Water network.

The primary connection main will require 50m of new 200mm ID pipe (green line) main to be laid to connect the site development (yellow section) to the 150mm uPVC, downstream of existing PRV. A pump upgrade may be further required.

The secondary connection mains will require 80m of new 200mm ID pipes to link the existing 100mm uPVC mains to the Development. Control valves must be installed on these connection mains (orange lines).



- **Wastewater Connection** - Feasible Subject to upgrades

Servicing of the completed Development will require the completion of the orbital sewer.

The Applicant can connect the initial 100 units from Phase 1 to the Commons Road sewer. Any additional units, beyond the initial 100, will require a PWSA to:

- Assess the capacity of the Poolboy WWPS and the network between the site and the Poolboy WWPS
- Fund any upgrades that may be identified as a result to serve the developments pending the coming into service of the proposed orbital sewer.

It would be preferable if all phase of the development in time connect to the proposed orbital sewer.

This letter does not constitute an offer, in whole or in part, to provide a connection to any Irish Water infrastructure. Before the Development can be connected to our network(s) you must submit a connection application and be granted and sign a connection agreement with Irish Water.

As the network capacity changes constantly, this review is only valid at the time of its completion. As soon as planning permission has been granted for the Development, a completed connection application should be submitted. The connection application is available at [www.water.ie/connections/get-connected/](http://www.water.ie/connections/get-connected/)

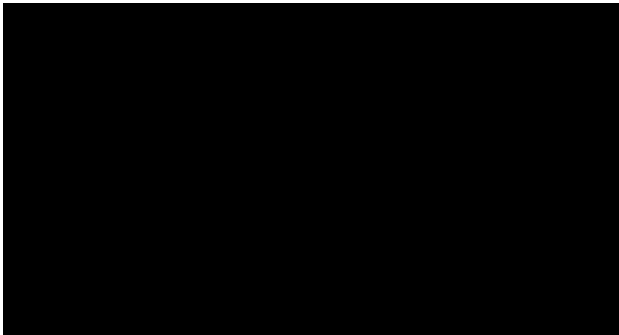
**Where can you find more information?**

- **Section A** - What is important to know?
- **Section B** - Details of Irish Water's Network(s)

**This letter is issued to provide information about the current feasibility of the proposed connection(s) to Irish Water's network(s). This is not a connection offer and capacity in Irish Water's network(s) may only be secured by entering into a connection agreement with Irish Water.**

For any further information, visit [www.water.ie/connections](http://www.water.ie/connections), email [REDACTED] or contact 1800 278 278.

Yours sincerely,



## Section A - What is important to know?

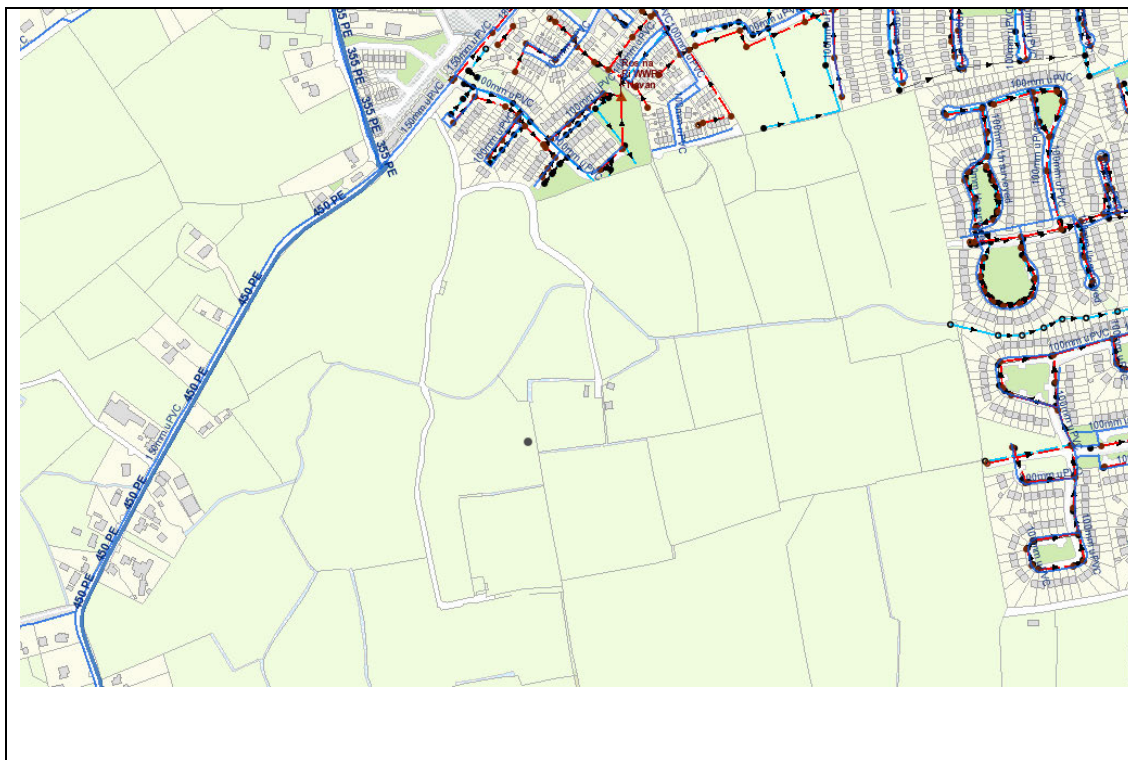
What is important to know?	Why is this important?
<b>Do you need a contract to connect?</b>	<ul style="list-style-type: none"> <li>• Yes, a contract is required to connect. This letter does not constitute a contract or an offer in whole or in part to provide a connection to Irish Water's network(s).</li> <li>• Before the Development can connect to Irish Water's network(s), you must submit a connection application <u>and be granted and sign</u> a connection agreement with Irish Water.</li> </ul>
<b>When should I submit a Connection Application?</b>	<ul style="list-style-type: none"> <li>• A connection application should only be submitted after planning permission has been granted.</li> </ul>
<b>Where can I find information on connection charges?</b>	<ul style="list-style-type: none"> <li>• Irish Water connection charges can be found at: <a href="https://www.water.ie/connections/information/charges/">https://www.water.ie/connections/information/charges/</a></li> </ul>
<b>Who will carry out the connection work?</b>	<ul style="list-style-type: none"> <li>• All works to Irish Water's network(s), including works in the public space, must be carried out by Irish Water*.</li> </ul> <p>*Where a Developer has been granted specific permission and has been issued a connection offer for Self-Lay in the Public Road/Area, they may complete the relevant connection works</p>
<b>Fire flow Requirements</b>	<ul style="list-style-type: none"> <li>• The Confirmation of Feasibility does not extend to fire flow requirements for the Development. Fire flow requirements are a matter for the Developer to determine.</li> <li>• <b>What to do?</b> - Contact the relevant Local Fire Authority</li> </ul>
<b>Plan for disposal of storm water</b>	<ul style="list-style-type: none"> <li>• The Confirmation of Feasibility does not extend to the management or disposal of storm water or ground waters.</li> <li>• <b>What to do?</b> - Contact the relevant Local Authority to discuss the management or disposal of proposed storm water or ground water discharges.</li> </ul>
<b>Where do I find details of Irish Water's network(s)?</b>	<ul style="list-style-type: none"> <li>• Requests for maps showing Irish Water's network(s) can be submitted to: <span style="background-color: black; color: black;">[REDACTED]</span></li> </ul>

<p><b>What are the design requirements for the connection(s)?</b></p>	<ul style="list-style-type: none"> <li>The design and construction of the Water &amp; Wastewater pipes and related infrastructure to be installed in this Development shall comply with <b><i>the Irish Water Connections and Developer Services Standard Details and Codes of Practice</i></b>, available at <a href="http://www.water.ie/connections">www.water.ie/connections</a></li> </ul>
<p><b>Trade Effluent Licensing</b></p>	<ul style="list-style-type: none"> <li>Any person discharging trade effluent** to a sewer, must have a Trade Effluent Licence issued pursuant to section 16 of the Local Government (Water Pollution) Act, 1977 (as amended).</li> <li>More information and an application form for a Trade Effluent License can be found at the following link: <a href="https://www.water.ie/business/trade-effluent/about/">https://www.water.ie/business/trade-effluent/about/</a></li> </ul> <p>**trade effluent is defined in the Local Government (Water Pollution) Act, 1977 (as amended)</p>

## Section B – Details of Irish Water’s Network(s)

The map included below outlines the current Irish Water infrastructure adjacent the Development: To access Irish Water Maps email

[REDACTED]



Reproduced from the Ordnance Survey of Ireland by Permission of the Government. License No. 3-3-34

**Note:** The information provided on the included maps as to the position of Irish Water’s underground network(s) is provided as a general guide only. The information is based on the best available information provided by each Local Authority in Ireland to Irish Water.

Whilst every care has been taken in respect of the information on Irish Water’s network(s), Irish Water assumes no responsibility for and gives no guarantees, undertakings or warranties concerning the accuracy, completeness or up to date nature of the information provided, nor does it accept any liability whatsoever arising from or out of any errors or omissions. This information should not be solely relied upon in the event of excavations or any other works being carried out in the vicinity of Irish Water’s underground network(s). The onus is on the parties carrying out excavations or any other works to ensure the exact location of Irish Water’s underground network(s) is identified prior to excavations or any other works being carried out. Service connection pipes are not generally shown but their presence should be anticipated.