

Category	Percentage
Very important	75%
Important	15%
Not important	10%
Don't know	0%

Re: Submission on the Residential Zoned Land Tax - Manorlands

We believe the above lands should not be included for the residential zoned land tax.

1. One part of the lands currently has the benefit of a planning permission which was granted under the SHD process. The developer has been actively trying to develop these lands for many years, however, the SHD grant has been challenged and is still in the process of going through the courts.
2. The second part of the lands has been refused planning permission by Meath County Council.
3. The developer has shown a genuine interest in developing the lands and the lands have not been developed due to circumstances outside the control of the developer.

Kind Regards

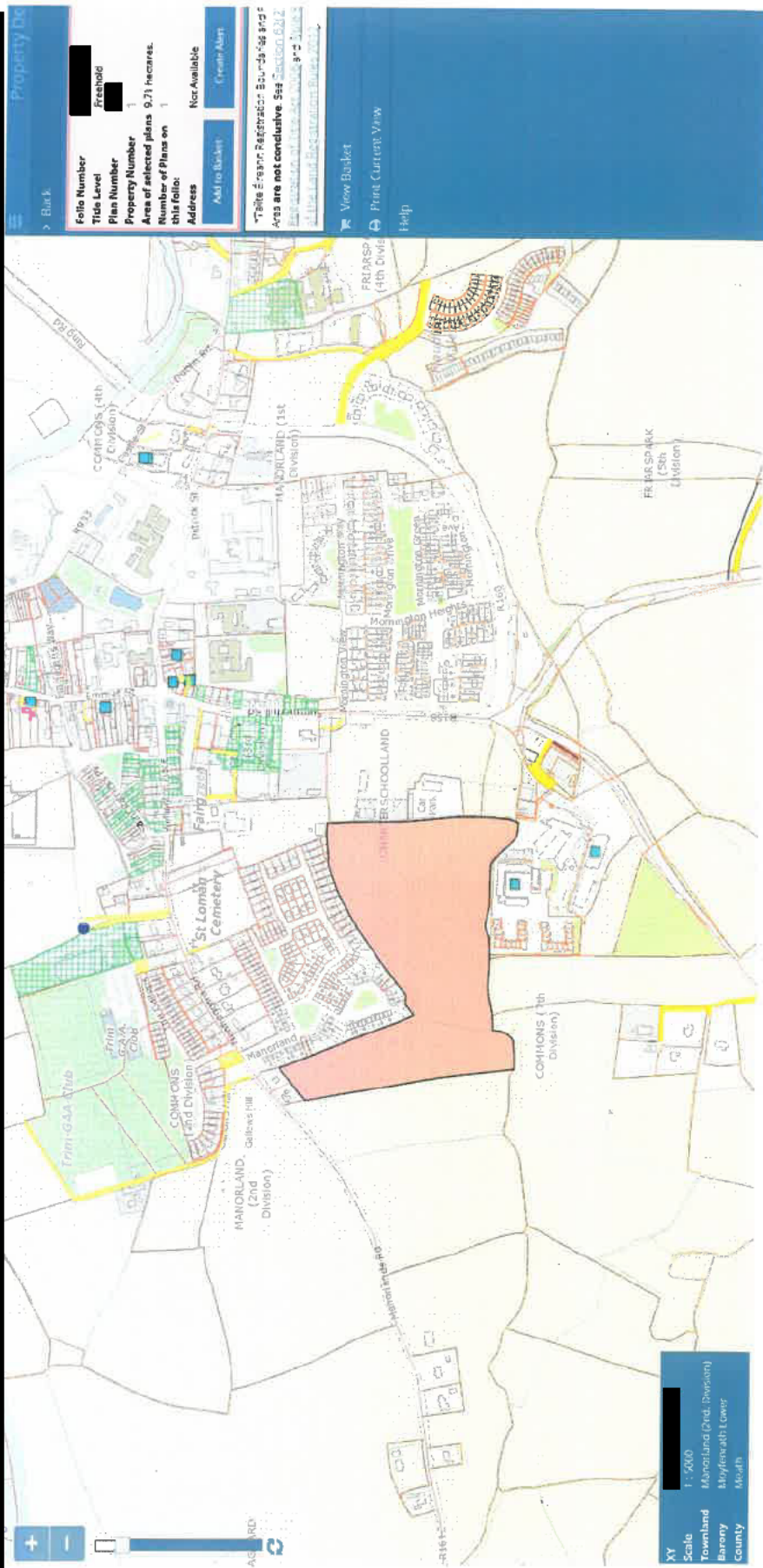
100

The screenshot shows a web application interface for property details. The main content area displays a map of a residential area in Newhaggar, with a large red-shaded polygon indicating the property boundary. The map includes labels for 'NEWHAGGAR', 'MANICBLAND (2nd Division)', 'CHARLES SCHOLLAND', and 'COHNSONS (1th Division)'. A sidebar on the left contains a 'Property Details' section with the following information:

- Back
- Folio Number
- Title Level
- Plan Number
- Property Number
- Area of selected plans 7.88 hectares
- Number of Plans on this folio: 1
- Address
- Add to Basket
- Not Available
- Create Alert

Below the sidebar, there is a warning message: "Zones are not conducive to development". At the bottom of the page, there is a footer with the following information:

- Scale: 1:2000
- Download: Map of Newhaggar (2nd Division)
- Barony: Moyneagh Lower
- County: Meath



Back

Property Details

Folio Number

Title Level

Plan Number

Property Number

Area of selected plans

Number of Plans on this folio

Address

Add to Basket

Not Available

Create Alert

Within 8 Years Registration Boundary and F

Areas are not conclusive

344

8-3

View Basket

Print Current View

Help

Scale

1:5000

County

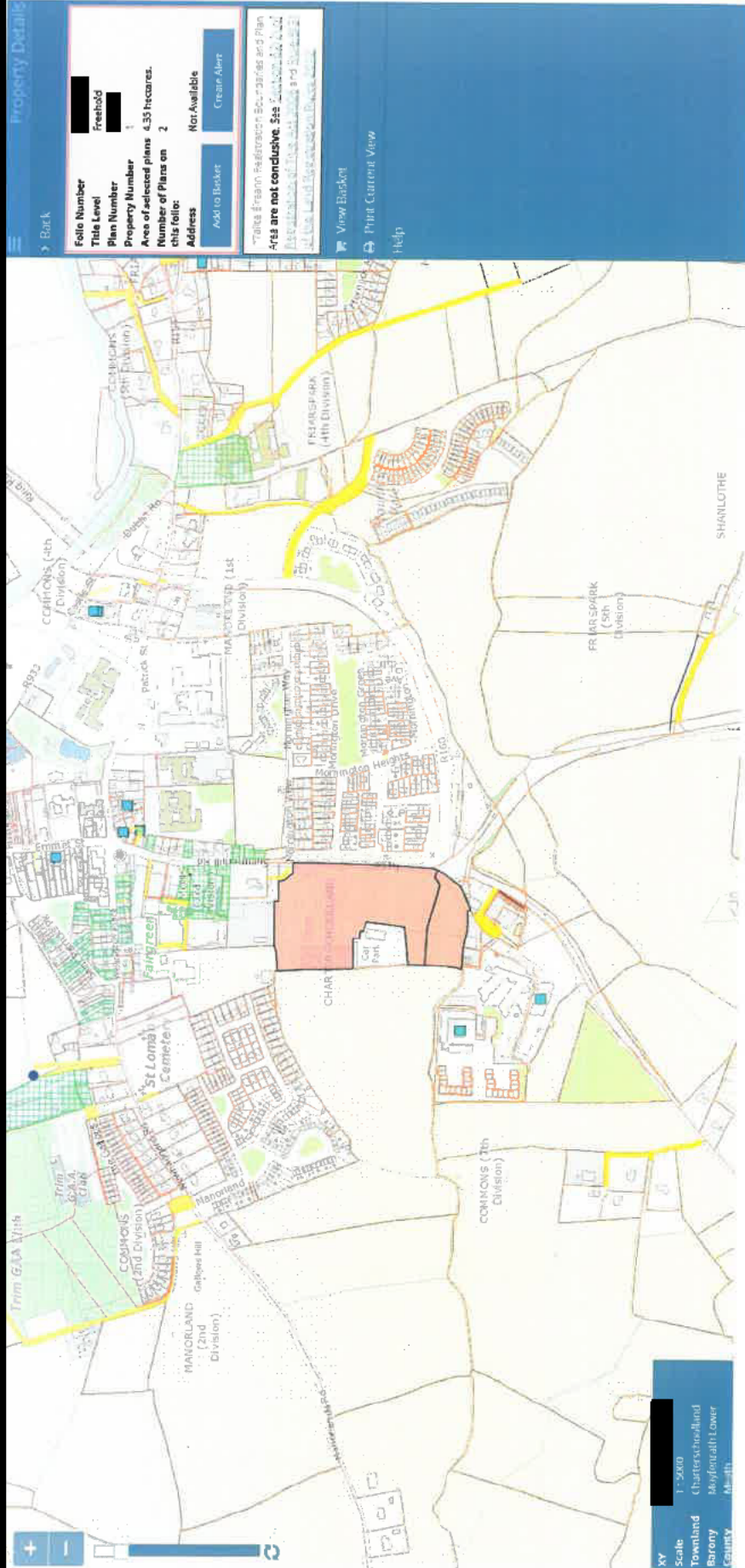
City

Ward

Electoral

Division

Map



[Show search results for Manor...](#)

MANORLAND
(2nd
Division)

Gallop's Hill

St Loman's Cemetery

COMMONS

Manonand

Morganton, V.

COMMONS (7th
Division)

679,522.859 756,206.256 Meters

© Tailte Éireann